

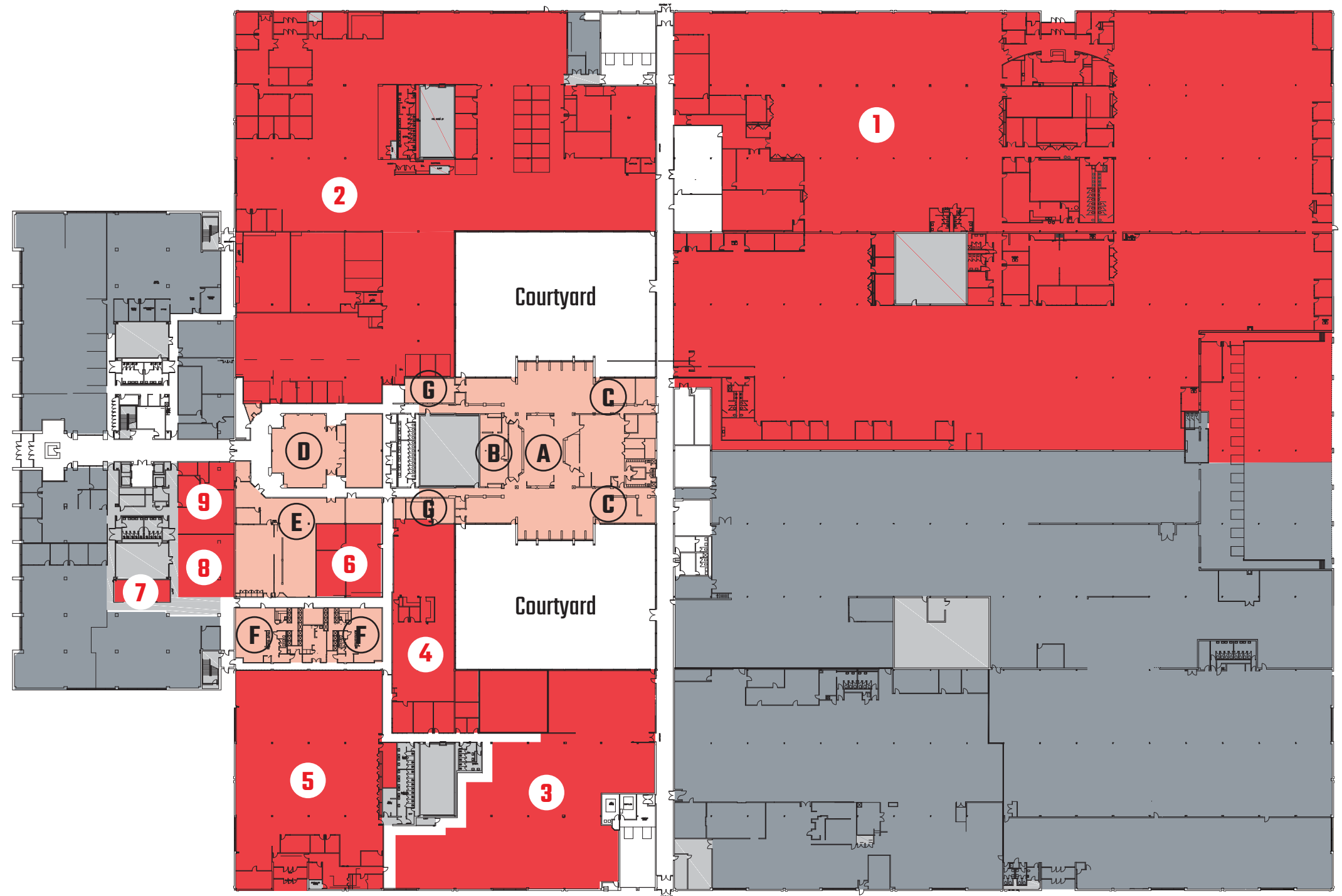
# 175 ADDISON

## THE HUB

### 1<sup>ST</sup> FLOOR

SPACE	RSF	DETAILS
1	135,519	Office / Flex Space / Loading Docks
2	59,452	Office / Flex Space / Loading Docks
3	16,853	Office / Flex Space / Loading Docks
4	10,900	Office. Tall windows around courtyard
5	17,235	Office. Dedicated Entrance
6	2,642	Data or storage room
7	679	Storage
8	1,937	Office. No Windows
9	2,226	Office. No Windows

Can be combined as  
44,988 RSF



#### BUILDING AMENITIES

- A. Cafeteria
- B. 24 Hour Market
- C. Game Areas
- D. Conference Center
- E. Fitness Center
- F. Showers/Lockers/Sauna
- G. Private dining

- MECHANICALS
- BUILDING AMENITIES
- OCCUPIED
- AVAILABLE

**JOEL GRIECO**  
Executive Director  
+1 860 616 1443  
joel.grieco@cushwake.com

**DAMON BOWERS**  
Managing Director  
+1 860 616 1433  
damon.bowers@cushwake.com

**PATRICK MULREADY**  
Managing Director  
+1 860 856 4437  
patrick.mulready@cushwake.com



**3<sup>RD</sup> FLOOR**

SPACE	RSF	DETAILS
1	27,639	Office. Can be divided
2	3,524	Office
3	5,092	Office
4	609	Conference room or storage

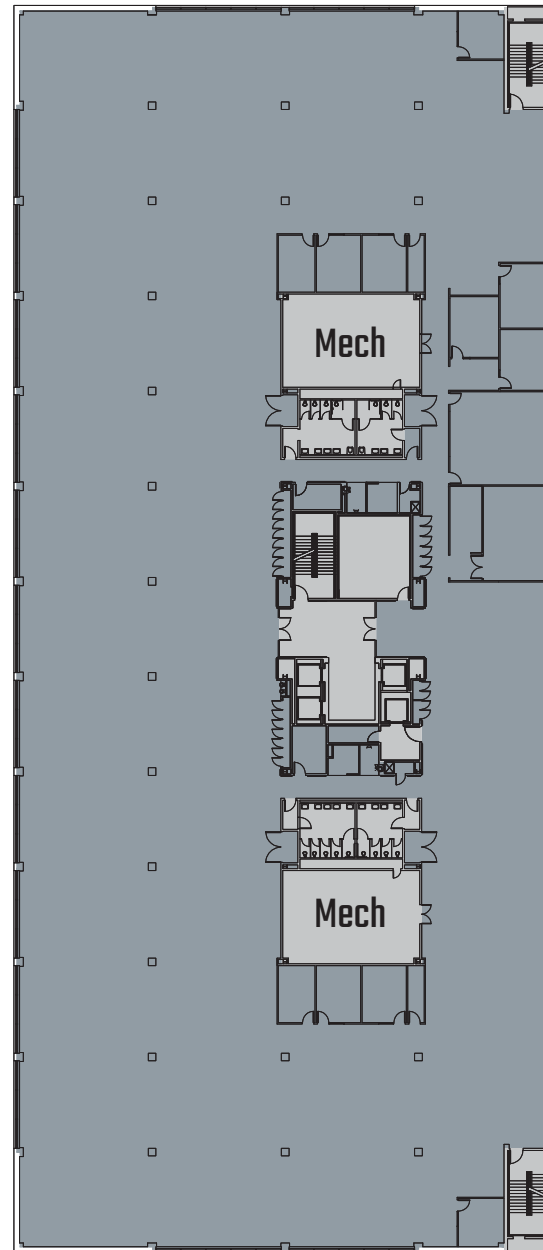
Can be combined as  
 31,163 RSF

**4<sup>TH</sup> FLOOR**

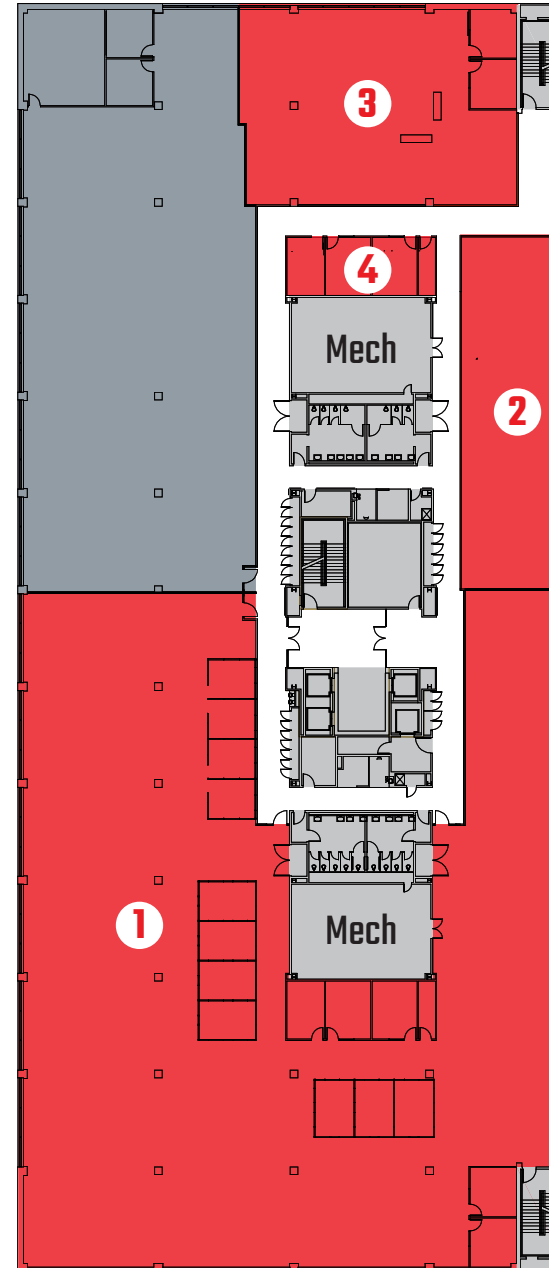
SPACE	RSF	DETAILS
1	49,593	Office. Full Floor

-  MECHANICALS
-  OCCUPIED
-  AVAILABLE

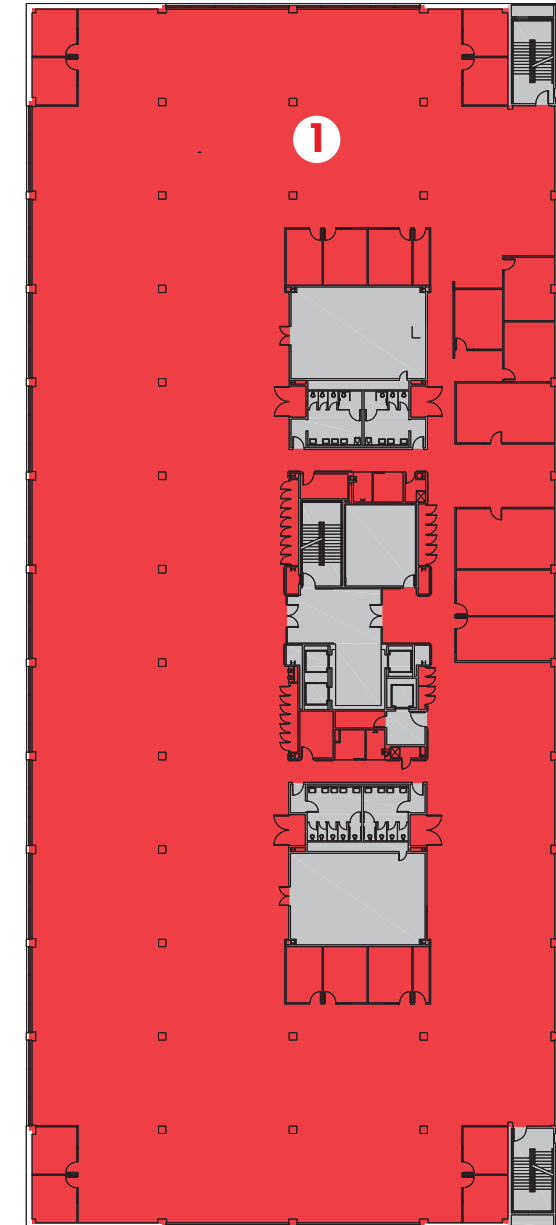
**2<sup>ND</sup> FLOOR**



**3<sup>RD</sup> FLOOR**



**4<sup>TH</sup> FLOOR**



**JOEL GRIECO**  
 Executive Director  
 +1 860 616 1443  
 joel.grieco@cushwake.com

**DAMON BOWERS**  
 Managing Director  
 +1 860 616 1433  
 damon.bowers@cushwake.com

**PATRICK MULREADY**  
 Managing Director  
 +1 860 856 4437  
 patrick.mulready@cushwake.com